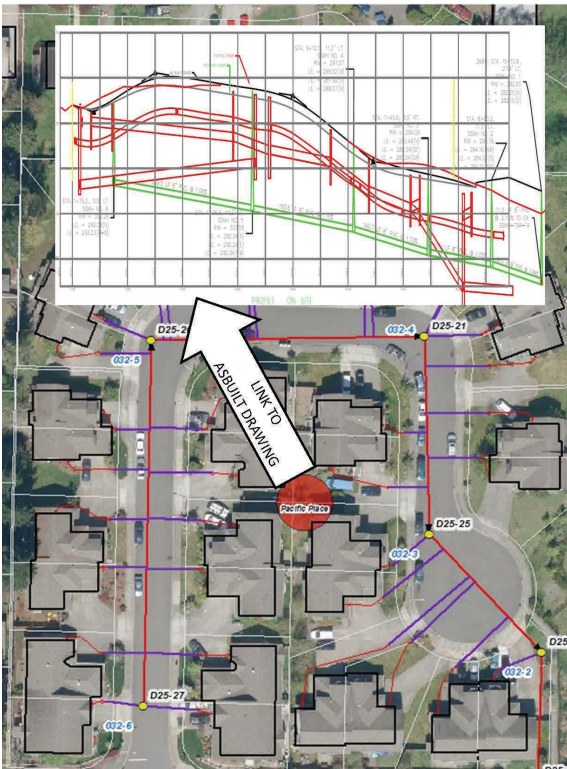


# The Drain Report

## Geographic Information System & Your Sewer

By: Stan Rupert

Geographic Information System (GIS) is an extremely useful tool using Global Positioning System (GPS) technology to geographically locate and display sewer infrastructure to an aerial map, similar to viewing hotels and restaurants on Google Earth. This computer based technology joins a multitude of information in an intuitive manner. Our maintenance department uses GIS to track scheduled and unscheduled pipe/manhole maintenance. At the main office we use GIS to access and display tens of thousands of documents at a click of the mouse.



GIS benefits our staff by allowing us to locate and view side sewer permit drawings, as-builts, easement documents and other data associated to the sewer infrastructure. Previous to this technology, we had to search through file drawers and cross reference paper drawings to locate other associated data and drawings. Our field inspectors and maintenance crew have the GIS loaded on laptops and can access information on site. Before GIS, they would make copies of drawings for a specific area, only to return to the office and make more copies for the next repair or inspection.

GIS benefits our customers by providing information in a timelier manner. Today we can view information and drawings with the customer using the GIS map at the front counter. Many of the side sewer drawings are projected on a map displaying a visual representation of the sewer in relation to a structure, parcel or other landmark. Also, when a customer calls for sewer information, we are able to view the area in question from our desk rather than spend time gathering drawings and other information while the customer is on hold or waiting for a call back.

## It Pays to Shop!

By: Ken Kase

Repairing or constructing a sewer is not the most popular expenditure a person can make. Buying something you really want can be a rewarding experience. I seriously doubt that someone feels rewarded after buying a sewer repair. But if you shop around for that repair you may save yourself enough money to go and buy something that will give you that rewarding feeling.

If you need a sewer or a sewer repair I recommend you get several bids. Make sure you clearly communicate what it is you want done. If you do this and the bids you get are responsive to your request it should be fairly easy to compare the bids. If all the prices are close then you know that the price is probably close to what it should cost. If the prices vary by a large margin then there may be something wrong. Either the bids were for different services or amount of services or perhaps the contractor was hoping to make a healthy profit.

It also helps if you are not in a big hurry to get the repair done immediately. Some contractors will work at any time of the day or night to fix your problems but this service can come at a premium. You may be able to save yourself a bundle if you are willing to stay in a hotel for a night or two and have the work done during regular business hours. It can save you a considerable amount of your hard earned money if you just take the time to shop around!

PO Box 3487, 3030 S. 240th St., Kent, WA 98089, (206) 824-4960  
<http://www.midwaysewer.org/>

### Inside this issue:

Geographic Information System &	1
It Pays To Shop!	1
Busy Construction Season	2
Congratulations to Our Operators!	2

### Special points of interest:

- Midway Sewer District has one of the lowest monthly rates in the state.
- The Board meets the 2nd and 4th Wednesday of each month. Please contact the office for the meeting time.
- Midway serves the Cities of Des Moines, SeaTac, Kent, Federal Way, Normandy park, Burien, and the Port of Seattle's SeaTac Airport.
- We have been part of this community since 1946.
- You can expect fast personal service when you need it.
- Our employees care about their customers.
- We have a single focus of providing quality sanitary sewer service.



# Busy Construction Season

By: Vince Koester



It sure seems to me that there are a lot of construction projects going on right now in our area. The City of Des Moines has been busy with their Transportation Gateway Projects near 24th Ave. S. and S. 216th St. They are also busy with their "Pipe projects" in the vicinity of S. 216th and Des Moines Memorial Drive S. The City of SeaTac continues to move large quantities of fill material for their 28th/24th Ave. Connector Project. That project will require rerouting of some sewers together with some new sewer extensions. SeaTac has also been busy for a while now on Military Road near S. 176th St. Sound Transit has made amazing progress on the extension of the Link Light Rail system. They are working to extend their service to S. 200th St. They are also in the planning stages of an additional extension to S. 240th St. All of these projects, when completed, should help make transportation in our area a little easier and safer.

Private developers have also been busy. A large hotel known as the Artemis Hotel is under construction near S. 224th St. and Pacific Hwy. S. This hotel will provide approximately 250 hotel rooms and several restaurants to this area. The Sea Mar Affordable Housing and Medical Office Building is also under construction in the vicinity of S. 242nd and Pacific Hwy. S. This could provide about 37 living units together with medical and dental office space. The Des Moines Creek Business Park at the NW corner of S. 216th St. and 24th Ave. S. could start construction soon. This project will provide manufacturing, warehouse, and office space to tenants that prefer to be located close to a major airport. There are several developers investigating their potential for multiple lot subdivisions. These include "Cedar Heights", a 27 lot PUD in the vicinity of 12th Ave. and S. 232nd St., "Highline View Estates", a 21 lot PUD near Highline College, and "Blueberry Lane", a 62 lot PUD near 196th St. and Des Moines Memorial Drive S.

The sewer District has been busy also. We are currently working on several upgrade and rehabilitation projects for our existing facilities. With one exception, none of our current projects extend service to new areas or expand treatment capacity. Our biggest project is the upgrade to the 7th Ave. S. pump station. The District is investing about 1.8 million dollars at this location to ensure that this important public asset continues to operate non-stop, 24 hours each day, 365 days a year. We are also rehabilitating approximately 5,000 feet of sewer in the downtown Des Moines area. We are repairing a secondary clarifier, removing a roof structure that contains asbestos and lead paint, recoating and insulating our digester lids, and coating certain pieces of treatment equipment to control corrosion.

All this work should have a positive impact on the service we provide and the economy we live in.

## Congratulations to Our Operators!

By: Ken Kase

I don't like to toot our own horn, but no one else will. The Midway Sewer District received the **Outstanding Wastewater Treatment Plant Award for 2013** from the Washington State Department of Ecology. This accomplishment places the Midway Sewer District among the top municipal wastewater treatment plants in Washington. All of the operations, maintenance, administrative, and management staff together with the Board of Commissioners take great pride in achieving this award.

## Outstanding Performance Award 2013

Washington State Department of Ecology

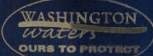
recognizes the exemplary effort and work accomplished by

Midway Sewer District

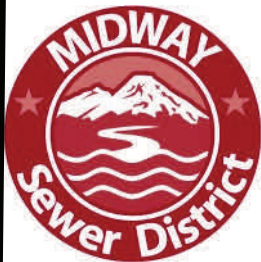
and the dedicated team at the

Midway Sewer District Wastewater Treatment Plant

Thank you for protecting and keeping Washington's waters clean.



## Board of Commissioners



George Landon Jack Hendrickson Vince Koester Jim Bailey Scot Sanborn

### Midway Sewer District

PO Box 3487

3030 South 240th Street

Kent, WA 98089

<http://www.midwaysewer.org/>

206-824-4960