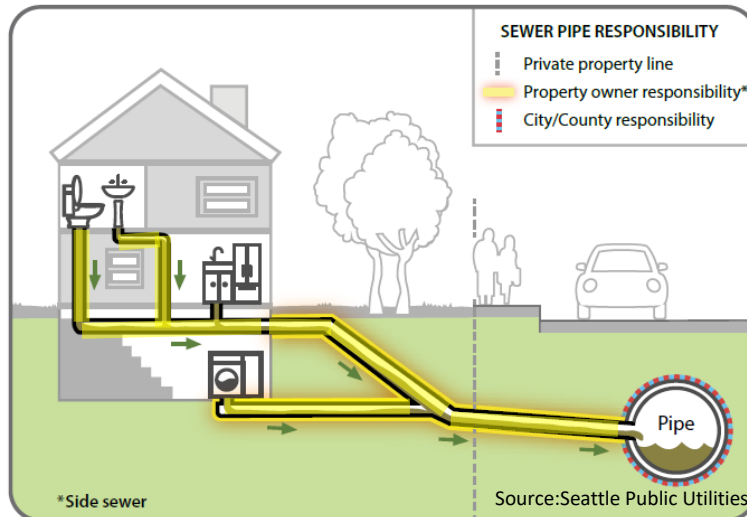


Poverty Bay Side Sewer Repair Rebate Program



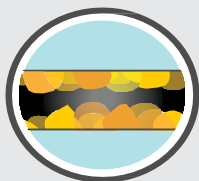
Where is my side sewer?

A “side sewer” is a privately-owned sewer pipe that carries wastewater from a building’s sinks, drains, and toilets to the public sewer mainline. If you own your home or building, you own your side sewer up until it connects to the sewer pipe.



Side sewer issues can be a health risk for you and your family

Sewage contains harmful bacteria, viruses, or pathogens that may pose a threat to the health of your family. Properly working side sewers (without cracks or clogging) ensure sewage does not leak outside the pipe. Side sewer issues may be caused by:



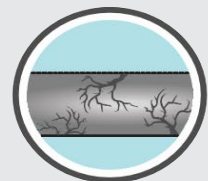
Cooking oil and grease from food preparation build-up in pipes.



Tree and shrub roots grow into cracks or holes—especially in older pipes.



Debris, such as flushed trash or other non-degradable materials, build up to cause clogging.



Old age – slumping, shifting joints, or antiquated materials can all result in side sewer issues.

Source: Seattle Public Utilities

Save up to \$5,000 when you have your side sewer repaired for:

- ✓ **Disconnecting roof downspouts or sump pumps from your side sewer**
- ✓ **Lining leaking side sewer pipes**
- ✓ **Capping a side sewer cleanout**

If you are a customer of Midway or Lakehaven Sewer Districts, apply for the rebate at www.kingcounty.gov/picrebates
Contact picrebates@kingcounty.gov for questions